



Nordpeis

THE NORWEGIAN EXPERIENCE



DESIGN THAT WARMS YOUR LIFE



We are passionate
about quality, design
and the environment

CLEAN COMBUSTION

Whilst enjoying the heat from our products, you can do so with a clear conscience. All of our fireplaces adhere to the world's strictest requirements for clean combustion.

Our fireplaces offer a high heat output by optimising their use of wood. Nordpeis products are approved by leading environmental bodies in Europe and are of course clean burning.



ENVIRONMENTALLY CONSCIOUS

INNOVATION

At Nordpeis, innovation and design are at the heart of everything we do. We are proud to offer environmentally friendly Norwegian combustion technology, both at home in Norway and across Europe.



Me Bench with oak front drawers

WOOD BURNING

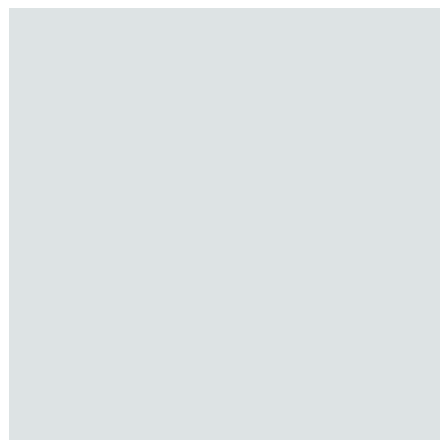
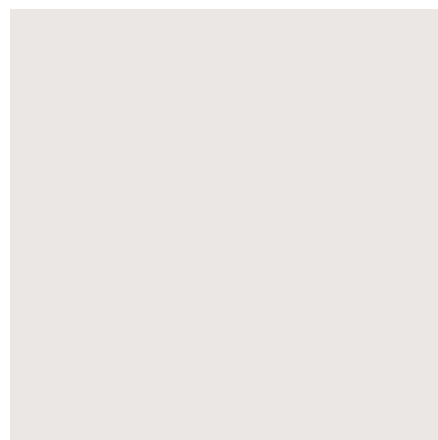
The firewood used in your fireplace should conform with your local environmental authority's recommendation.



Monaco A with woodshelf

Contents

A fireplace or stove is not just a source of heat, it is a piece of furniture which creates a heart in your home





| | |
|----------------------------|----|
| Unwind with natural warmth | 10 |
| Et smykke i stuen | 16 |
| Finn din egen stil | 24 |
| Peis eller ovn? | 34 |
| Inspirert av skog og hav | 40 |
| Plassér peisen hvor du vil | 46 |

HYGGE

Hygge: An
atmosphere of
cosiness, warmth
and wellbeing.



Unwind with natural warmth

In our hectic lives, a fireplace brings a moment of calm. Research shows that a live fire helps to reduce stress levels.







The crackling
of a live fire helps
us to pause, and
slow down in a
fast-paced world

We attend meditation courses; we
try yoga and practice mindfulness.

When everything around us moves so
fast, we will try anything to relax and
find a moment of calm, but natural
relaxation can be as simple as sitting
and looking into the glowing flames of
a fire - hearing the crackle, enjoying
the familiar smell of firewood.

Fire has been a gathering place for
people throughout the ages, and at
the heart of homes for centuries.
A fire does more than just heat a
home, it creates a sense of security
and cosiness.

HYGGE



@telemarkhytter / Davos U

FACTS

In a study by the University of Alabama, the blood pressure of 226 people was tested whilst watching a burning fireplace. The conclusion was clear: During the test the blood pressure of the test subjects started to lower! (Lynn, C., 2014).

In other words: Having a wood burning fire in the home relieves stress!



@miamari.holst / Praha

Kilde: Lynn, C. (2014). Hearth and campfire influences on arterial blood pressure: defraying the costs of the social brain through fireside relaxation. *Evolutionary psychology: an international journal of evolutionary approaches to psychology and behavior*, 12 5, 983-1003.

Extend your summer with an outdoor fireplace, bringing warmth and enjoyment to your garden

Air by Nordpeis is modular and can be used as both a fire pan and grill.



@jenny_gevaert / Air Base







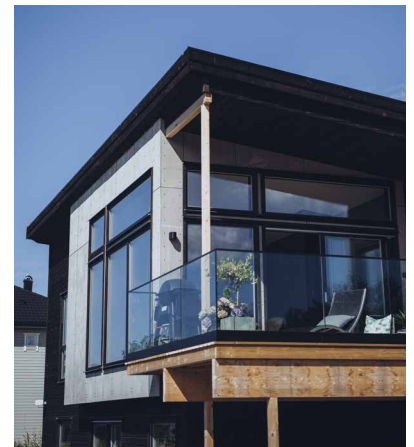
A JEWEL IN THE LIVING ROOM

«We wanted a house with that little extra in the form of fresh, exciting details and solutions. That is why we chose the wood-burning stove Me»

Hege & Benn

When we chose to build a house, there were several things that were important to get right. We wanted a house with a modern feel, functional and practical solutions, but also a little extra in the form of fresh, exciting design, which we would not only enjoy, but would inspire our Instagram account followers: @medandreord.

A beautiful Nordpeis, ceilingmounted, Me Ceiling wood-burning stove was firmly on our wish list.





We chose the stove because of its innovative and modern design. In terms of practicality, cleaning is easy as it is suspended from the ceiling, freeing up the floorspace below.

Next, we had the idea of integrating tiles into the floor (also to meet fire safety requirements). We chose hexagon tiles in an asymmetrical pattern to create a little extra space for the heat resistant zone - it has been

very well received by our followers on Instagram. Hege and Benn spent a lot of time planning. They took inspiration from nature, trips, social media and renovation programs on television.

Our best tip for others is to plan well and always think holistically. Think, amongst other things, about how you want your home to be heated.

We chose wood burning for several

reasons: The cosiness factor of wood burning is important, but also efficient and environmentally friendly combustion helped to guide our choice. The Me Ceiling now hangs like a jewel in our living room, with its distinctive and exciting design.

We are both creative, constantly thinking up new ideas, so it's great fun to be able to realize our vision through architecture and design.



Recessed
floor tiles meet
fire safety
requirements.





Among other things, we added extra ceiling height and an extra row of windows in the living room, to enjoy the view and make the best possible use of natural light. The integrated office corner in the kitchen and the laundry rack from the bathroom to the laundry room are examples of small solutions that have a positive practical impact on everyday life.

Aesthetic «twists and turns», continue with the forest photo wallpaper on the wall behind the bed in the master bedroom, paired with green on the ceiling and other walls to achieve the illusion of sleeping out in nature.

We have also spent a lot of time choosing which materials should be used in the house.

On the outside, we chose black cladding and wall panels in concrete.



This aesthetic is repeated inside, where we have used elements of black and concrete in most rooms, supplemented with wood to add visual warmth to the palette.

PERSONALISATION

Your
personal
home



EXPRESS YOUR STYLE

- The most important interior trend today is that there is no trend. We can create personalised warmth around us.

*Björg Owren,
creative leader i IFI*









ANYTHING IS POSSIBLE

What colours do you like to have around you? What makes you feel at home in a room? What makes you happy, and what makes you calm? We've been through minimalism, we've had white walls and stylish interiors, but now? Now everything is allowed!



@bos_cabin / Cannes

Today is all about well-being, playfulness and authenticity...and what is more authentic than a live, natural fire? Choose a fireplace in the style that suits you, and if you want to make it even more personal you can paint the fireplace in any colour you want.

PERSONALISATION

Today is all
about well-being,
playfulness and
authenticity

Today, there
is no right or
wrong

Most of our fireplaces arrive in untreated concrete, and traditionally we have painted them white. But how about painting the fireplace to match your wall colour, creating a holistic interior design? Or maybe you want the fireplace to pop with a contrasting colour? Blue, green, purple - or how about keeping the untreated concrete for a raw aesthetic?

Limewash is also an option to create an interesting finish. Today, there is no right or wrong, as long as it's right for you, that's what matters. Interior design is freer, creative and individual. Individuality is the new exclusivity!





@miamari.holst has painted her Praha in the same color as the wall (Impression from Jotun), while @malenes_home has painted her Praha black, which is a stark contrast to the white.

POSSIBILITIES

A fireplace
that suits you



STOVE OR FIREPLACE?

Fireplace or stove? What is the difference, and what is right for you?





Considerations: How large an area do you need to heat and where will the fire be located? Is the fire the main source of heating or supplementary? Can your floor take the weight of your chosen fire? Check the building regulations of your home as it may need extra air

supply when installing a fireplace. The heat output you need depends on your house type, insulation, size of window area, as well as the climate in which you live. Usually, a well-insulated home needs a heat output of approx. 60-70 W per square meter.



FIREPLACE

- Integrated in the home
- Can be painted in a chosen colour
- Can often be adapted with accessories such as woodshelves, elevation modules etc. for a more personalized solution
- Natural heat storage in concrete radiates heat after firing



Davos U

STOVE

- Location-friendly
- Often delivered pre-painted
- Often has fewer options for personalization



Duo



Me Bench

The round Me wood-burning stove offers many opportunities. It comes in several different designs, and can be mounted on the wall, hang from the ceiling or placed on the floor.



Me Ceiling



Me Wall



Me Wall
with firewall



Me Glass



Me Pedestal



Me Steel



@bos_cabin / Cannes



INSPIRED BY THE FOREST AND THE SEA

We wanted to create a fluid transition between outside and inside, so the interior of the house is inspired by the surrounding nature, says Teresa Woodall.

The architect-designed, modern house has fantastic views of the Swedish west coast with the forest at the rear.

Expansive windows welcome nature into the house, and the interior echoes elements from the outside: The concrete floors continues out onto the terrace. The green tones that capture the palette of the forest. The herringbone pattern on the wall in the bathroom gives the impression of driftwood.

Wood is an important element in the scheme: - We used oak on the roof, stairs and kitchen. The wood softens the interior and creates warmth. Nordpeis' Davos fireplace is a stylish eye-catcher in the house, says Teresa.





Teresa recently moved into the house with her husband Anders, and they are not quite done with the decor yet.

- So far, we have used the furniture we had, but we want to update the furnishing in line with a clean, Nordic aesthetic - but the furniture must also be comfortable and soft. It should be comfortable to sit for a long time at the dining table with good food and a fireplace.

The fireplace extends four and a half meters up to the ceiling, and you can see the flames from three sides. - We chose to paint the fireplace in the same green tone as the wall, so that it looks built-in - it blends in with the wall. It creates harmony in the room. The best thing is that we can see the flames when we cook, when we sit on the sofa, when we enter from the entrance hall, no matter where we are on the first floor of the house. In addition to

painting the fireplace, they used black spray on the grilles, which were white from before.

- For our aesthetic we wanted to use black, as we have other black elements around the house. We are looking forward to life here, we have a truly personalised home. The open rooms surrounded by nature bring a sense of calm, says Teresa.

«We chose to paint the fireplace in the same green tone as the wall»



Davos P High

You can see more of
the house on Instagram
[@nytthusmedutsikt](#)

Salzburg - the heat retaining fireplace





Salzburg C Convection

HOW DOES IT WORK?

Heat retaining fireplaces provide both a smoother and more efficient heat. They differ from other types of appliances by releasing heat over a longer time, even after the fire has gone out. If you heat your house with a heat-storing fireplace, you save both money, the environment and have a more comfortable warmth.

Conventional fireplaces emit intense heat during operation however they cool very quickly. The Nordpeis Salzburg series is based on a long duct to optimally store with heat in the core, which is then emitted over time. The smoke from this series is reduced to just over 100 °C when entering the chimney. The efficiency of a well-constructed, heat retaining fireplace is therefore

- Heat up to 24 hours with only a few loads
- Heat when you awake
- No uncomfortable intense heat periods
- High efficiency and economy
- Simple and quick installation

far above the efficiency of a common fireplace. A Salzburg model can give you heat throughout day with only a few heating cycles.

Heat up to 24 hours
with only a few loads

High efficiency
and economy

Simple and quick
installation



Salzburg M II



Salzburg L Basic



Salzburg L Konvektion



Salzburg XL



Salzburg C Basic



Salzburg C Konvektion





Nordpeis is the largest supplier of an iconic Norwegian fixture – the fireplace. With a passionate interest for detail, quality and innovation, we are part of creating signature Norwegian designs.

